

Addition and Subtraction: Worksheet – 4

1. Subtract the following.

a) $10 - 3 = \underline{\hspace{2cm}}$

b) $8 - 4 = \underline{\hspace{2cm}}$

c) $5 - 3 = \underline{\hspace{2cm}}$

d) $9 - 5 = \underline{\hspace{2cm}}$

e) $6 - 2 = \underline{\hspace{2cm}}$

f) $6 - 4 = \underline{\hspace{2cm}}$

2. Add the following.

a) $5 + 2 = \underline{\hspace{2cm}}$

b) $5 + 4 = \underline{\hspace{2cm}}$

c) $3 + 4 = \underline{\hspace{2cm}}$

d) $2 + 6 = \underline{\hspace{2cm}}$

e) $6 + 3 = \underline{\hspace{2cm}}$

f) $10 + 1 = \underline{\hspace{2cm}}$

3. Fill in the missing numbers.

a) $5 + \underline{\hspace{1cm}} = 3$

b) $15 - \underline{\hspace{1cm}} = 10$

c) $6 + \underline{\hspace{1cm}} = 10$

d) $14 - \underline{\hspace{1cm}} = 13$

e) $0 + \underline{\hspace{1cm}} = 11$

f) $9 - \underline{\hspace{1cm}} = 8$

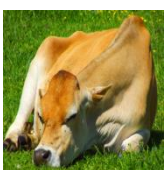
g) $9 + \underline{\hspace{1cm}} = 12$

h) $5 - \underline{\hspace{1cm}} = 5$

i) $10 + \underline{\hspace{1cm}} = 14$

j) $4 - \underline{\hspace{1cm}} = 2$

4. There are 10 cows in a shed. Some cows are sleeping and some cows are eating grass. How many are sleeping ?



$$5 + \underline{\hspace{1cm}} = 10$$



5. There were 8 pebbles. 5 are red remaining are green. How many are green.



$$5 + \underline{\quad} = 8$$

HOTS :

a) $1 + 3 + \underline{\quad} = 6$

b) $2 + 4 + \underline{\quad} = 6$

c) $3 + 1 + \underline{\quad} = 7$

